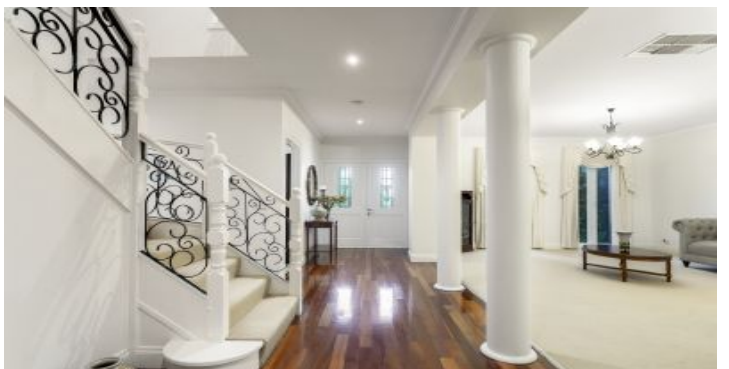




Our advertised  
Open For Inspections  
are By Registration only.

Please contact the  
agent first to register  
your attendance.



## 16 Parkville Place DONVALE

\$1,600,000 - \$1,700,000

### An Elegant Family Residence

Commanding attention on an elevated cul-de-sac block of 860sqm (approx.), this immaculate four bedroom plus study home combines beauty and function in a spectacular garden setting. Beyond enchanting landscaped surrounds, a columned facade with double doors reveals superbly integrated indoor and outdoor living zones. A formal lounge/dining area is located at the front, progressing to an expansive open-plan living and casual meals space warmed by a gas log fire. The stone kitchen will delight with its S/S appliances, large pantry and dedicated wine storage. A home for all seasons, a series of French doors bring the outside in with the centerpiece a covered alfresco overlooking the private rear garden. First-class accommodation enjoys upper level seclusion with a generous retreat and balcony with views the highlight. A lavish master bedroom includes a luxurious twin vanity ensuite with spa bath and WIR, while the remaining bedrooms have BIRs and share a family bathroom with separate WC. Climate-controlled with both heating and cooling, this bespoke home is complete with polished hardwood floors, a remote double garage with rear roller door, sizeable laundry and guest powder...

4 Bed | 2 Bath | 2 Car

### Contact

Michael Webb

0428431019

Jack Treacey

0432696048